

POLSKIE WYDAWNICTWO MUZYCZNE

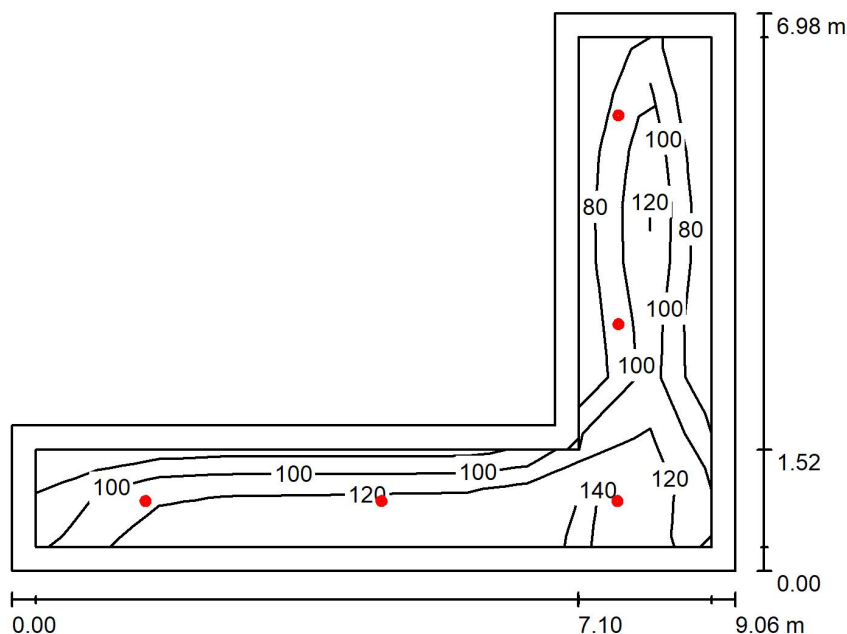
Wyniki obliczeń poziomu natężenia oświetlenia w wybranych pomieszczeniach

Partner for Contact:
Order No.:
Company:
Customer No.:

Date: 18.04.2024
Operator:

Operator
Telephone
Fax
e-Mail

0.06 Komunikacja / Summary



Height of Room: 2.440 m, Mounting Height: 2.440 m, Maintenance factor: 0.90

Values in Lux, Scale 1:90

Surface	ρ [%]	E_{av} [lx]	E_{min} [lx]	E_{max} [lx]	u_0
Workplane	/	116	69	151	0.595
Floor	20	100	27	154	0.272
Ceiling	70	14	9.00	18	0.628
Walls (6)	50	28	8.42	87	/

Workplane:

Height: 0.100 m
Grid: 11 x 9 Points
Boundary Zone: 0.300 m

Illuminance Quotient (according to LG7): Walls / Working Plane: 0.237, Ceiling / Working Plane: 0.124.

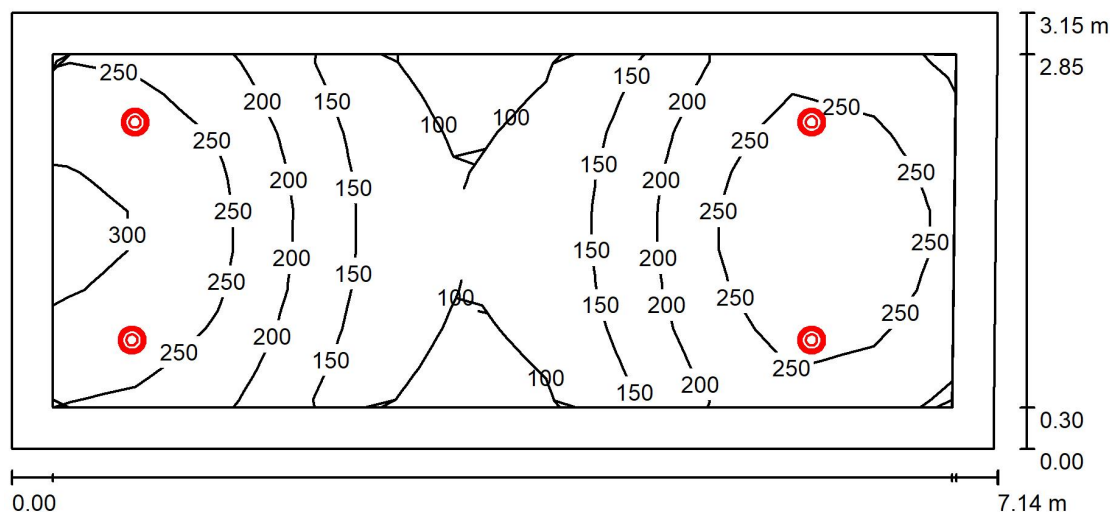
Luminaire Parts List

No.	Pieces	Designation (Correction Factor)	Φ (Luminaire) [lm]	Φ (Lamps) [lm]	P [W]
1	5	ERCO 80274000 Skim Downlight oval flood 1xLED 8.1W warm white (1.000)	771	771	10.0
Total:			3855	3855	50.0

Specific connected load: $1.77 \text{ W/m}^2 = 1.53 \text{ W/m}^2/100 \text{ lx}$ (Ground area: 28.18 m^2)

Operator
Telephone
Fax
e-Mail

0.04, A.01, 1.01, 2.01, 3.01, 4.01 Kl. schodowa / Summary



Height of Room: 3.000 m, Mounting Height: 3.000 m, Maintenance factor: 0.90

Values in Lux, Scale 1:52

Surface	ρ [%]	E_{av} [lx]	E_{min} [lx]	E_{max} [lx]	u_0
Workplane	/	200	80	305	0.403
Floor	20	189	76	296	0.399
Ceiling	70	35	26	43	0.747
Walls (4)	50	79	26	251	/

Workplane:

Height: 0.100 m
Grid: 11 x 9 Points
Boundary Zone: 0.300 m

Illuminance Quotient (according to LG7): Walls / Working Plane: 0.391, Ceiling / Working Plane: 0.172.

Luminaire Parts List

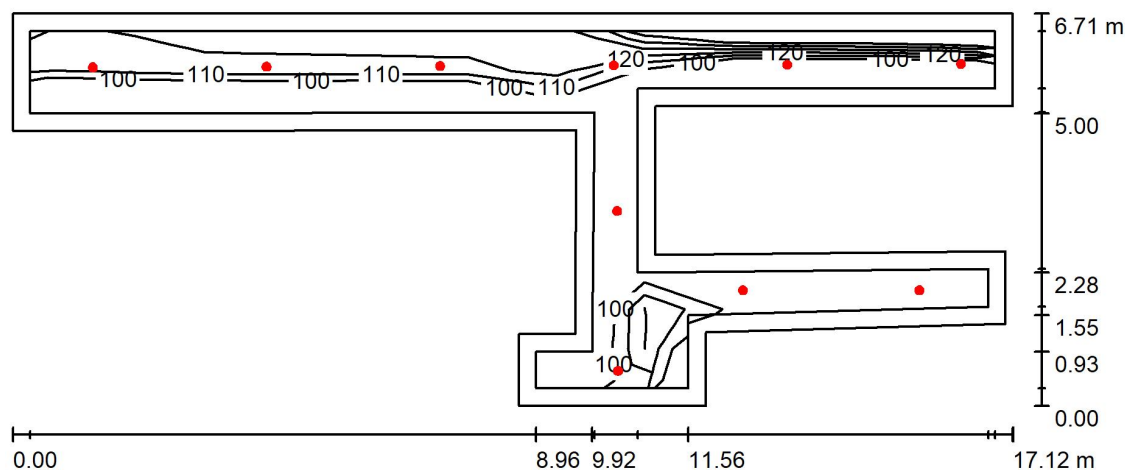
No.	Pieces	Designation (Correction Factor)	Φ (Luminaire) [lm]	Φ (Lamps) [lm]	P [W]
1	4	ERCO 86387000 Skim Surface-mounted downlight 1xLED 18W warm white (1.000)	1684	1684	21.0
Total:			6736	6736	84.0

Specific connected load: $3.74 \text{ W/m}^2 = 1.88 \text{ W/m}^2/100 \text{ lx}$ (Ground area: 22.43 m^2)



Operator
Telephone
Fax
e-Mail

A.04 Komunikacja / Summary



Height of Room: 2.400 m, Mounting Height: 2.400 m, Maintenance factor: 0.90

Values in Lux, Scale 1:123

Surface	ρ [%]	E_{av} [lx]	E_{min} [lx]	E_{max} [lx]	$u0$
Workplane	/	121	96	141	0.787
Floor	20	106	47	144	0.439
Ceiling	70	16	11	22	0.691
Walls (14)	50	33	9.41	159	/

Workplane:

Height: 0.100 m
Grid: 11 x 9 Points
Boundary Zone: 0.300 m

Illuminance Quotient (according to LG7): Walls / Working Plane: 0.271, Ceiling / Working Plane: 0.131.

Luminaire Parts List

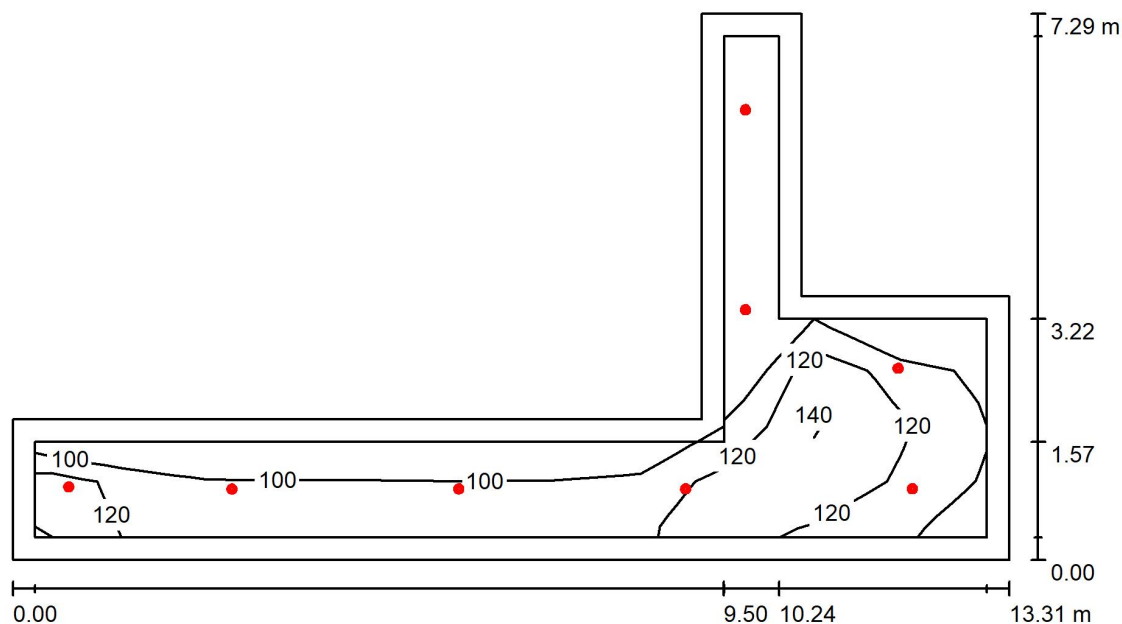
No.	Pieces	Designation (Correction Factor)	Φ (Luminaire) [lm]	Φ (Lamps) [lm]	P [W]
1	10	ERCO 86343000 Skim Surface-mounted downlight oval flood 1xLED 8W warm white (1.000)	750	750	10.0
Total:			7500	7500	100.0

Specific connected load: $2.08 \text{ W/m}^2 = 1.71 \text{ W/m}^2/100 \text{ lx}$ (Ground area: 48.13 m^2)



Operator
Telephone
Fax
e-Mail

1.04 Komunikacja / Summary



Height of Room: 3.000 m, Mounting Height: 3.000 m, Maintenance factor: 0.90

Values in Lux, Scale 1:96

Surface	ρ [%]	E_{av} [lx]	E_{min} [lx]	E_{max} [lx]	u_0
Workplane	/	114	93	151	0.817
Floor	20	104	57	149	0.546
Ceiling	70	17	12	22	0.722
Walls (8)	50	37	12	165	/

Workplane:

Height: 0.100 m
Grid: 11 x 9 Points
Boundary Zone: 0.300 m

Illuminance Quotient (according to LG7): Walls / Working Plane: 0.325, Ceiling / Working Plane: 0.148.

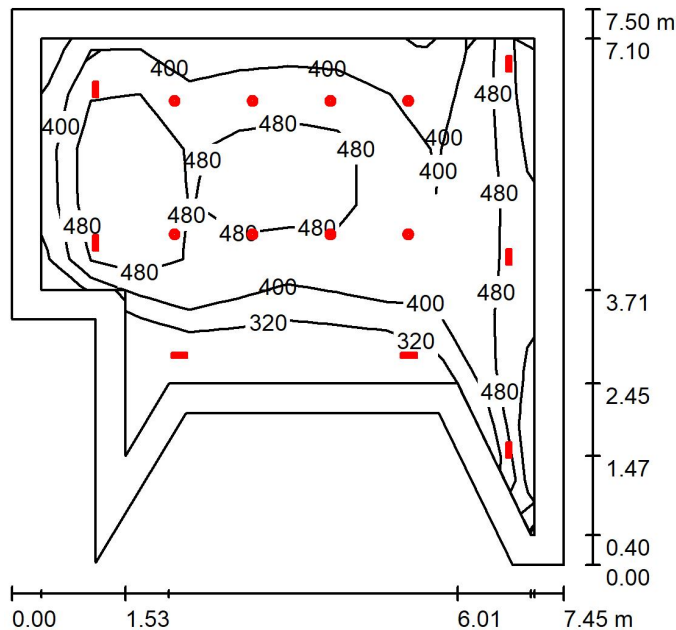
Luminaire Parts List

No.	Pieces	Designation (Correction Factor)	Φ (Luminaire) [lm]	Φ (Lamps) [lm]	P [W]
1	8	ERCO 80274000 Skim Downlight oval flood 1xLED 8.1W warm white (1.000)	771	771	10.0
Total:			6168	6168	80.0

Specific connected load: $2.18 \text{ W/m}^2 = 1.91 \text{ W/m}^2/100 \text{ lx}$ (Ground area: 36.73 m^2)

Operator
Telephone
Fax
e-Mail

1.15a Sala Joachimeckiego / Summary



Height of Room: 3.000 m, Maintenance factor: 0.90

Values in Lux, Scale 1:97

Surface	ρ [%]	E_{av} [lx]	E_{min} [lx]	E_{max} [lx]	u_0
Workplane	/	444	262	647	0.591
Floor	20	341	30	523	0.087
Ceiling	70	52	18	64	0.346
Walls (9)	50	81	11	569	/

Workplane:

Height: 0.850 m
Grid: 10 x 9 Points
Boundary Zone: 0.400 m

Illuminance Quotient (according to LG7): Walls / Working Plane: 0.165, Ceiling / Working Plane: 0.120.

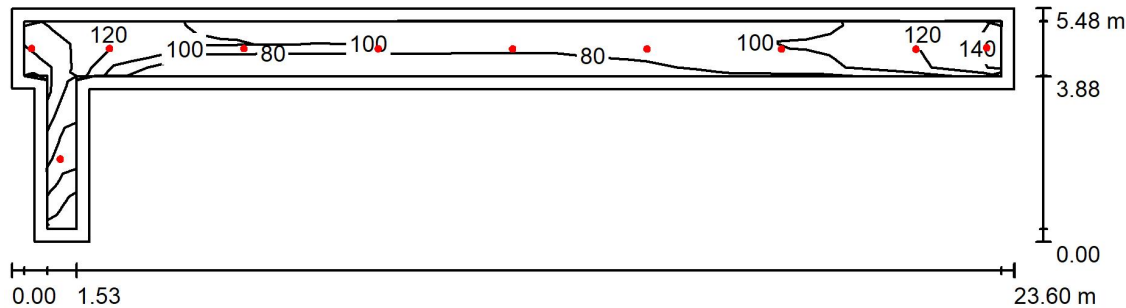
Luminaire Parts List

No.	Pieces	Designation (Correction Factor)	Φ (Luminaire) [lm]	Φ (Lamps) [lm]	P [W]
1	8	ERCO 86334000 Skim Surface-mounted downlight 1xLED 12.4W warm white (1.000)	1044	1044	16.0
2	2	ERCO 86847000 Compar Downlight 1xLED 18.5W warm white (1.000)	1333	1333	22.0
3	5	ERCO 86853000 Compar Downlight oval flood 1xLED 18.5W warm white (1.000)	1421	1421	22.0
Total:			18123	18123	282.0

Specific connected load: $6.59 \text{ W/m}^2 = 1.48 \text{ W/m}^2/100 \text{ lx}$ (Ground area: 42.81 m^2)

Operator
Telephone
Fax
e-Mail

2.03, 3.03, 4.03 Komunikacja / Summary



Height of Room: 3.000 m, Mounting Height: 3.000 m, Maintenance factor: 0.90

Values in Lux, Scale 1:169

Surface	ρ [%]	E_{av} [lx]	E_{min} [lx]	E_{max} [lx]	$u0$
Workplane	/	107	68	146	0.632
Floor	20	95	48	153	0.503
Ceiling	70	15	9.86	31	0.640
Walls (8)	50	35	9.90	160	/

Workplane:

Height: 0.100 m
Grid: 11 x 9 Points
Boundary Zone: 0.300 m

Illuminance Quotient (according to LG7): Walls / Working Plane: 0.329, Ceiling / Working Plane: 0.148.

Luminaire Parts List

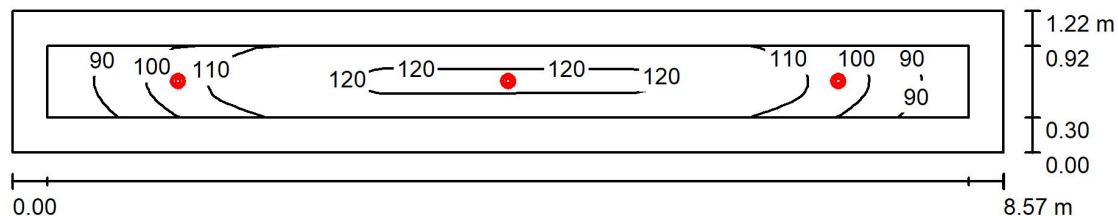
No.	Pieces	Designation (Correction Factor)	Φ (Luminaire) [lm]	Φ (Lamps) [lm]	P [W]
1	10	ERCO 80274000 Skim Downlight oval flood 1xLED 8.1W warm white (1.000)	771	771	10.0
Total:			7710	7710	100.0

Specific connected load: $2.03 \text{ W/m}^2 = 1.90 \text{ W/m}^2/100 \text{ lx}$ (Ground area: 49.28 m^2)



Operator
Telephone
Fax
e-Mail

2.04 Komunikacja / Summary



Height of Room: 3.000 m, Mounting Height: 3.000 m, Maintenance factor: 0.90

Values in Lux, Scale 1:62

Surface	ρ [%]	E_{av} [lx]	E_{min} [lx]	E_{max} [lx]	u_0
Workplane	/	110	84	122	0.768
Floor	20	99	63	117	0.641
Ceiling	70	17	12	21	0.711
Walls (4)	50	41	11	94	/

Workplane:

Height: 0.100 m
Grid: 11 x 9 Points
Boundary Zone: 0.300 m

Illuminance Quotient (according to LG7): Walls / Working Plane: 0.375, Ceiling / Working Plane: 0.155.

Luminaire Parts List

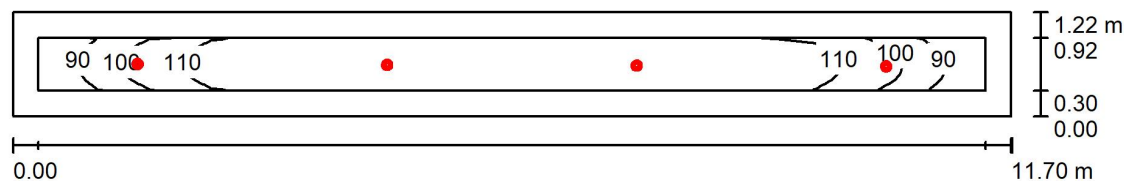
No.	Pieces	Designation (Correction Factor)	Φ (Luminaire) [lm]	Φ (Lamps) [lm]	P [W]
1	3	ERCO 80274000 Skim Downlight oval flood 1xLED 8.1W warm white (1.000)	771	771	10.0
Total:			2313	2313	30.0

Specific connected load: $2.88 \text{ W/m}^2 = 2.63 \text{ W/m}^2/100 \text{ lx}$ (Ground area: 10.41 m^2)



Operator
Telephone
Fax
e-Mail

3.04 Komunikacja / Summary



Height of Room: 3.000 m, Mounting Height: 3.000 m, Maintenance factor: 0.90

Values in Lux, Scale 1:84

Surface	ρ [%]	E_{av} [lx]	E_{min} [lx]	E_{max} [lx]	$u0$
Workplane	/	110	86	120	0.779
Floor	20	100	61	115	0.614
Ceiling	70	17	11	21	0.644
Walls (4)	50	41	10	95	/

Workplane:

Height: 0.100 m
Grid: 11 x 9 Points
Boundary Zone: 0.300 m

Illuminance Quotient (according to LG7): Walls / Working Plane: 0.371, Ceiling / Working Plane: 0.155.

Luminaire Parts List

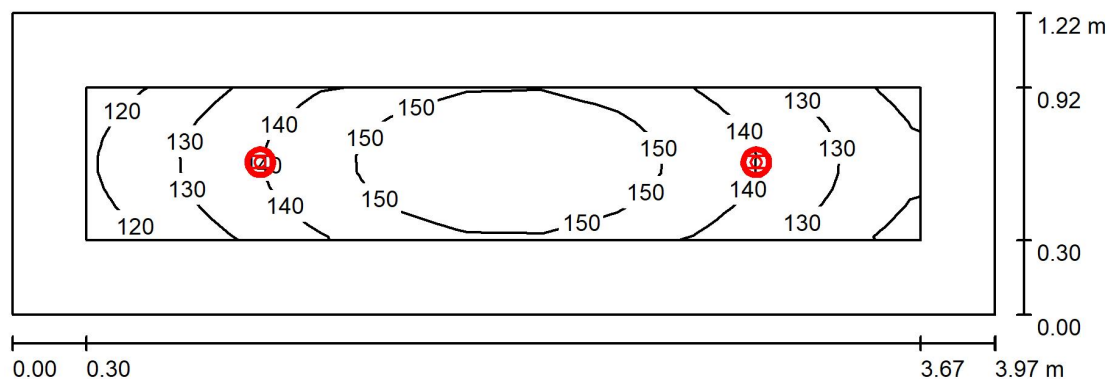
No.	Pieces	Designation (Correction Factor)	Φ (Luminaire) [lm]	Φ (Lamps) [lm]	P [W]
1	4	ERCO 80274000 Skim Downlight oval flood 1×LED 8.1W warm white (1.000)	771	771	10.0
Total:			3084	3084	40.0

Specific connected load: $2.81 \text{ W/m}^2 = 2.56 \text{ W/m}^2/100 \text{ lx}$ (Ground area: 14.22 m^2)



Operator
Telephone
Fax
e-Mail

4.04 Komunikacja / Summary



Height of Room: 2.900 m, Mounting Height: 2.900 m, Maintenance factor: 0.90

Values in Lux, Scale 1:29

Surface	ρ [%]	E_{av} [lx]	E_{min} [lx]	E_{max} [lx]	$u0$
Workplane	/	140	117	159	0.833
Floor	20	123	88	151	0.716
Ceiling	70	23	17	27	0.720
Walls (4)	50	58	16	155	/

Workplane:

Height: 0.100 m
Grid: 11 x 9 Points
Boundary Zone: 0.300 m

Illuminance Quotient (according to LG7): Walls / Working Plane: 0.415, Ceiling / Working Plane: 0.167.

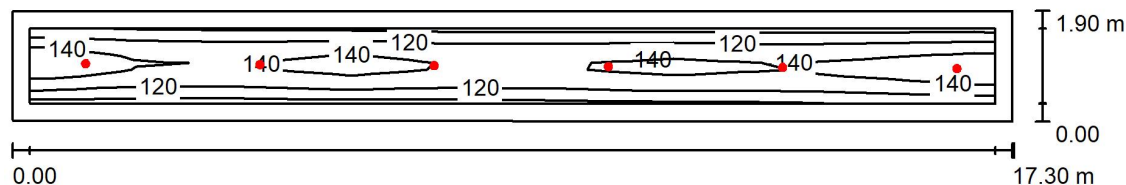
Luminaire Parts List

No.	Pieces	Designation (Correction Factor)	Φ (Luminaire) [lm]	Φ (Lamps) [lm]	P [W]
1	2	ERCO 80274000 Skim Downlight oval flood 1xLED 8.1W warm white (1.000)	771	771	10.0
Total:			1542	1542	20.0

Specific connected load: $4.15 \text{ W/m}^2 = 2.96 \text{ W/m}^2/100 \text{ lx}$ (Ground area: 4.82 m^2)

Operator
Telephone
Fax
e-Mail

5.04 Komunikacja / Summary



Height of Room: 2.250 m, Mounting Height: 2.250 m, Maintenance factor: 0.90

Values in Lux, Scale 1:124

Surface	ρ [%]	E_{av} [lx]	E_{min} [lx]	E_{max} [lx]	$u0$
Workplane	/	125	95	151	0.755
Floor	20	107	55	142	0.514
Ceiling	70	15	11	17	0.736
Walls (4)	50	29	11	141	/

Workplane:

Height: 0.100 m
Grid: 11 x 9 Points
Boundary Zone: 0.300 m

Illuminance Quotient (according to LG7): Walls / Working Plane: 0.233, Ceiling / Working Plane: 0.124.

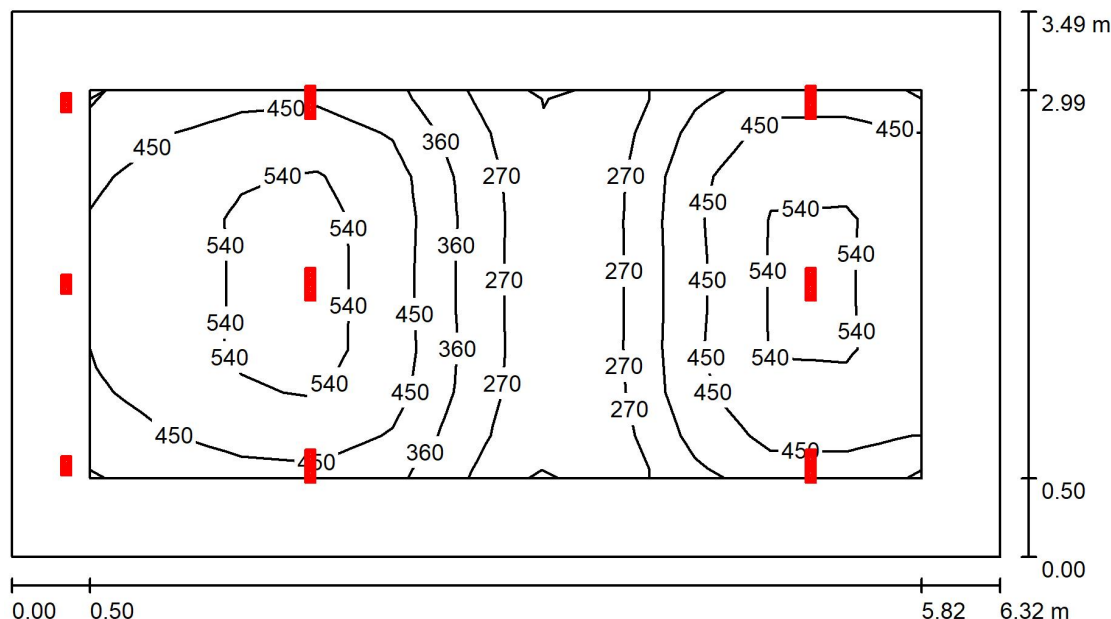
Luminaire Parts List

No.	Pieces	Designation (Correction Factor)	Φ (Luminaire) [lm]	Φ (Lamps) [lm]	P [W]
1	6	ERCO 80274000 Skim Downlight oval flood 1×LED 8.1W warm white (1.000)	771	771	10.0
Total:			4626	4626	60.0

Specific connected load: $1.83 \text{ W/m}^2 = 1.47 \text{ W/m}^2/100 \text{ lx}$ (Ground area: 32.70 m^2)

Operator
Telephone
Fax
e-Mail

0.01 Hol wejściowy / Summary



Height of Room: 5.500 m, Maintenance factor: 0.90

Values in Lux, Scale 1:46

Surface	ρ [%]	E_{av} [lx]	E_{min} [lx]	E_{max} [lx]	$u0$
Workplane	/	425	155	581	0.364
Floor	20	353	161	523	0.456
Ceilings (3)	70	36	25	60	/
Walls (4)	50	72	23	417	/

Workplane:

Height: 0.850 m
Grid: 11 x 9 Points
Boundary Zone: 0.500 m

Illuminance Quotient (according to LG7): Walls / Working Plane: 0.142, Ceiling / Working Plane: 0.084.

Luminaire Parts List

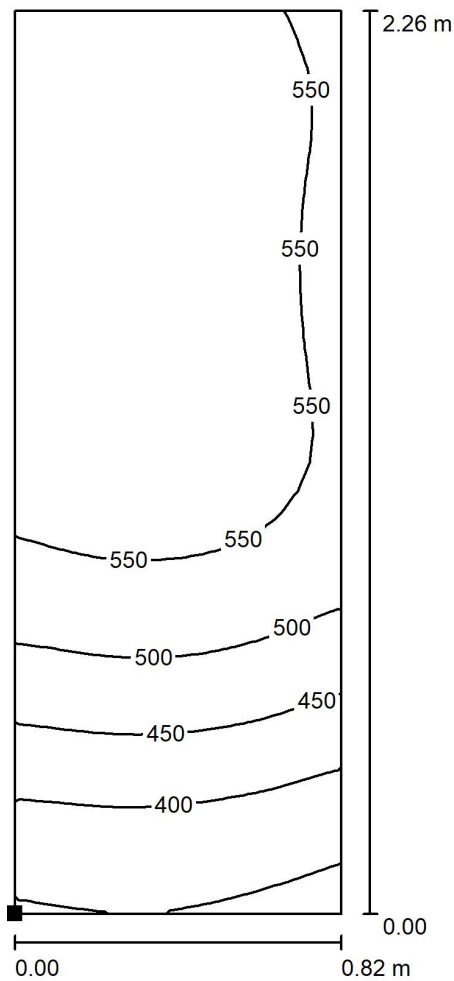
No.	Pieces	Designation (Correction Factor)	Φ (Luminaire) [lm]	Φ (Lamps) [lm]	P [W]
1	6	ERCO 54071000 Compar Downlight 1xLED 18.5W warm white (1.000)	1582	1582	22.0
2	3	ERCO 86817000 Compar Downlight oval flood 1xLED 6.0W warm white (1.000)	534	534	8.8
Total:			11094	11094	158.4

Specific connected load: $7.19 \text{ W/m}^2 = 1.69 \text{ W/m}^2/100 \text{ lx}$ (Ground area: 22.04 m^2)

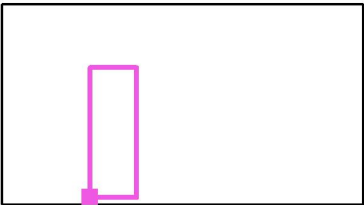


Operator
Telephone
Fax
e-Mail

0.01 Hol wejściowy / Stół w holu wejściowym / Isolines (E, Perpendicular)



Position of surface in room:
Marked point:
(4.232 m, -7.097 m, 0.850 m)



Values in Lux, Scale 1 : 18

Grid: 16 x 32 Points

E_{av} [lx]
518

E_{min} [lx]
334

E_{max} [lx]
584

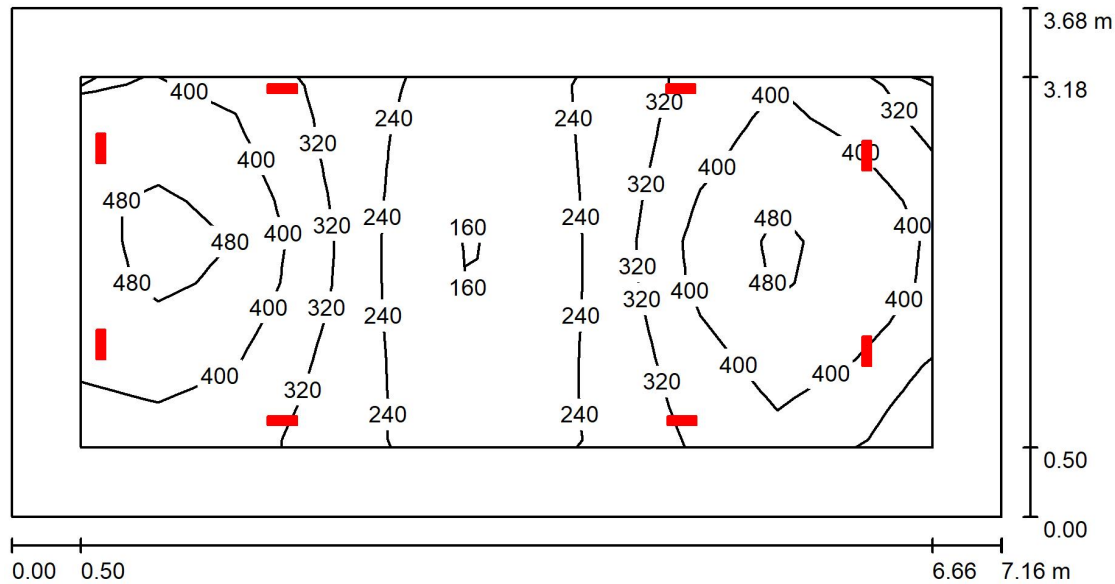
u_0
0.646

E_{min} / E_{max}
0.572



Operator
Telephone
Fax
e-Mail

1.14 Foyer Sali Kameralnej / Summary



Height of Room: 2.700 m, Mounting Height: 2.700 m, Maintenance factor: 0.90

Values in Lux, Scale 1:52

Surface	ρ [%]	E_{av} [lx]	E_{min} [lx]	E_{max} [lx]	$u0$
Workplane	/	340	143	532	0.419
Floor	20	272	170	356	0.624
Ceiling	70	53	34	66	0.633
Walls (4)	50	116	36	422	/

Workplane:

Height: 0.850 m
Grid: 11 x 9 Points
Boundary Zone: 0.500 m

Illuminance Quotient (according to LG7): Walls / Working Plane: 0.329, Ceiling / Working Plane: 0.157.

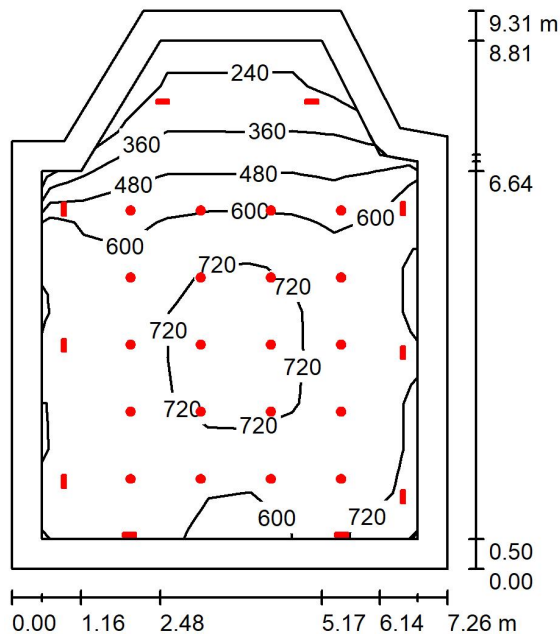
Luminaire Parts List

No.	Pieces	Designation (Correction Factor)	Φ (Luminaire) [lm]	Φ (Lamps) [lm]	P [W]
1	8	ERCO 86847000 Compar Downlight 1xLED 18.5W warm white (1.000)	1333	1333	22.0
Total:			10664	10664	176.0

Specific connected load: $6.68 \text{ W/m}^2 = 1.97 \text{ W/m}^2/100 \text{ lx}$ (Ground area: 26.33 m^2)

Operator
 Telephone
 Fax
 e-Mail

1.15 Sala Kameralna SKIM / Summary



Height of Room: 3.000 m, Maintenance factor: 0.90

Values in Lux, Scale 1:120

Surface	ρ [%]	E_{av} [lx]	E_{min} [lx]	E_{max} [lx]	u_0
Workplane	/	599	214	775	0.357
Floor	20	494	142	744	0.287
Ceiling	70	78	47	99	0.613
Walls (8)	50	117	51	310	/

Workplane:

 Height: 0.850 m
 Grid: 11 x 9 Points
 Boundary Zone: 0.500 m

Illuminance Quotient (according to LG7): Walls / Working Plane: 0.164, Ceiling / Working Plane: 0.131.

Luminaire Parts List

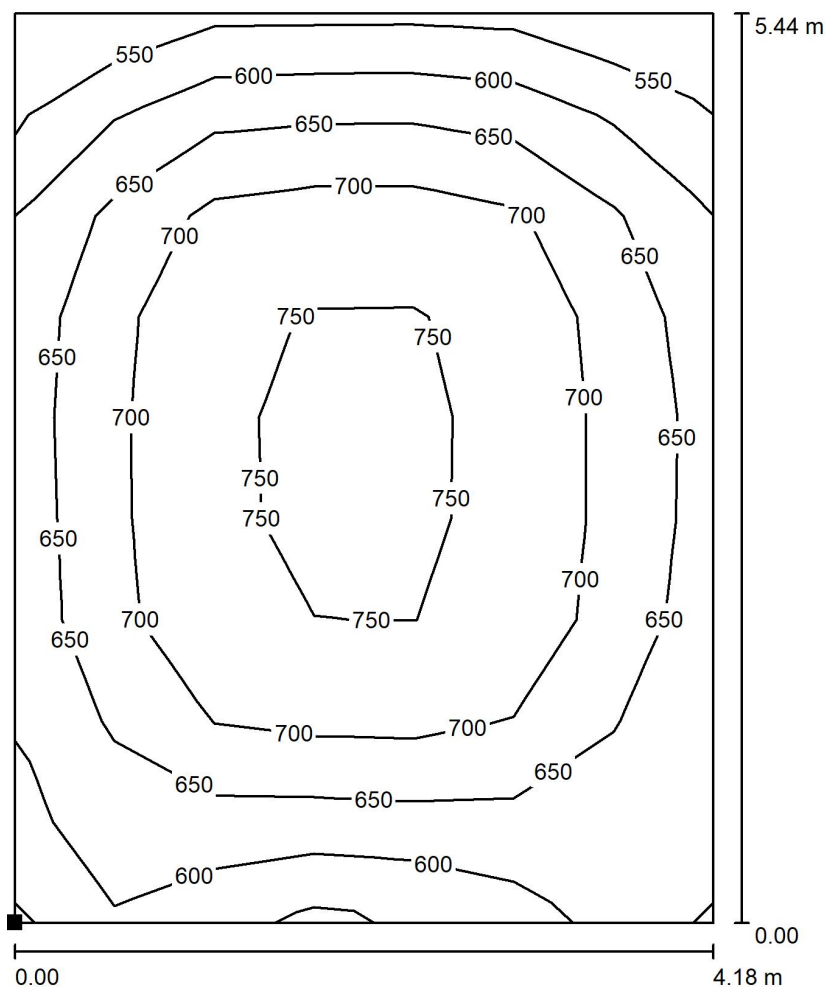
No.	Pieces	Designation (Correction Factor)	Φ (Luminaire) [lm]	Φ (Lamps) [lm]	P [W]
1	20	ERCO 86334000 Skim Surface-mounted downlight 1xLED 12.4W warm white (1.000)	1044	1044	16.0
2	2	ERCO 86847000 Compar Downlight 1xLED 18.5W warm white (1.000)	1333	1333	22.0
3	8	ERCO 86853000 Compar Downlight oval flood 1xLED 18.5W warm white (1.000)	1421	1421	22.0
Total:			34914	34914	540.0

 Specific connected load: $8.75 \text{ W/m}^2 = 1.46 \text{ W/m}^2/100 \text{ lx}$ (Ground area: 61.75 m^2)

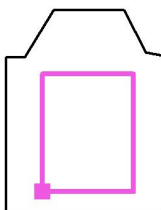


Operator
Telephone
Fax
e-Mail

1.15 Sala Kameralna SKIM / Widownia / Isolines (E, Perpendicular)



Position of surface in room:
Marked point:
(-4.142 m, -5.670 m, 0.850 m)



Values in Lux, Scale 1 : 43

Grid: 7 x 9 Points

E_{av} [lx]
672

E_{min} [lx]
523

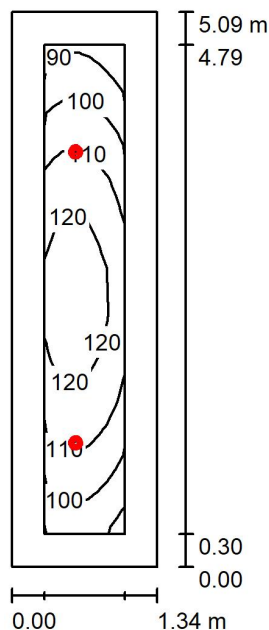
E_{max} [lx]
771

u_0
0.777

E_{min} / E_{max}
0.678

Operator
Telephone
Fax
e-Mail

1.05 Komunikacja / Summary



Height of Room: 3.000 m, Mounting Height: 3.000 m, Maintenance factor: 0.90

Values in Lux, Scale 1:66

Surface	ρ [%]	E_{av} [lx]	E_{min} [lx]	E_{max} [lx]	u_0
Workplane	/	110	84	127	0.764
Floor	20	98	61	122	0.625
Ceiling	70	18	12	20	0.680
Walls (4)	50	43	12	113	/

Workplane:

Height: 0.100 m
Grid: 11 x 9 Points
Boundary Zone: 0.300 m

Illuminance Quotient (according to LG7): Walls / Working Plane: 0.395, Ceiling / Working Plane: 0.160.

Luminaire Parts List

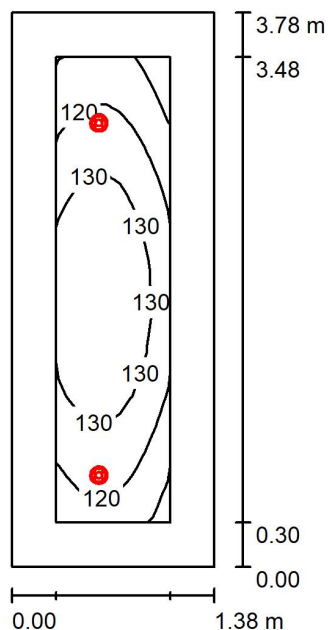
No.	Pieces	Designation (Correction Factor)	Φ (Luminaire) [lm]	Φ (Lamps) [lm]	P [W]
1	2	ERCO 80274000 Skim Downlight oval flood 1xLED 8.1W warm white (1.000)	771	771	10.0
Total:			1542	1542	20.0

Specific connected load: $2.94 \text{ W/m}^2 = 2.68 \text{ W/m}^2/100 \text{ lx}$ (Ground area: 6.80 m^2)



Operator
Telephone
Fax
e-Mail

1.04 Komunikacja / Summary



Height of Room: 3.000 m, Mounting Height: 3.000 m, Maintenance factor: 0.90

Values in Lux, Scale 1:49

Surface	ρ [%]	E_{av} [lx]	E_{min} [lx]	E_{max} [lx]	u_0
Workplane	/	126	104	140	0.827
Floor	20	112	79	134	0.706
Ceiling	70	24	18	30	0.743
Walls (4)	50	58	17	324	/

Workplane:

Height: 0.100 m
Grid: 11 x 9 Points
Boundary Zone: 0.300 m

Illuminance Quotient (according to LG7): Walls / Working Plane: 0.455, Ceiling / Working Plane: 0.194.

Luminaire Parts List

No.	Pieces	Designation (Correction Factor)	Φ (Luminaire) [lm]	Φ (Lamps) [lm]	P [W]
1	2	ERCO 80274000 Skim Downlight oval flood 1×LED 8.1W warm white (1.000)	771	771	10.0
Total:			1542	1542	20.0

Specific connected load: $3.85 \text{ W/m}^2 = 3.05 \text{ W/m}^2/100 \text{ lx}$ (Ground area: 5.20 m^2)